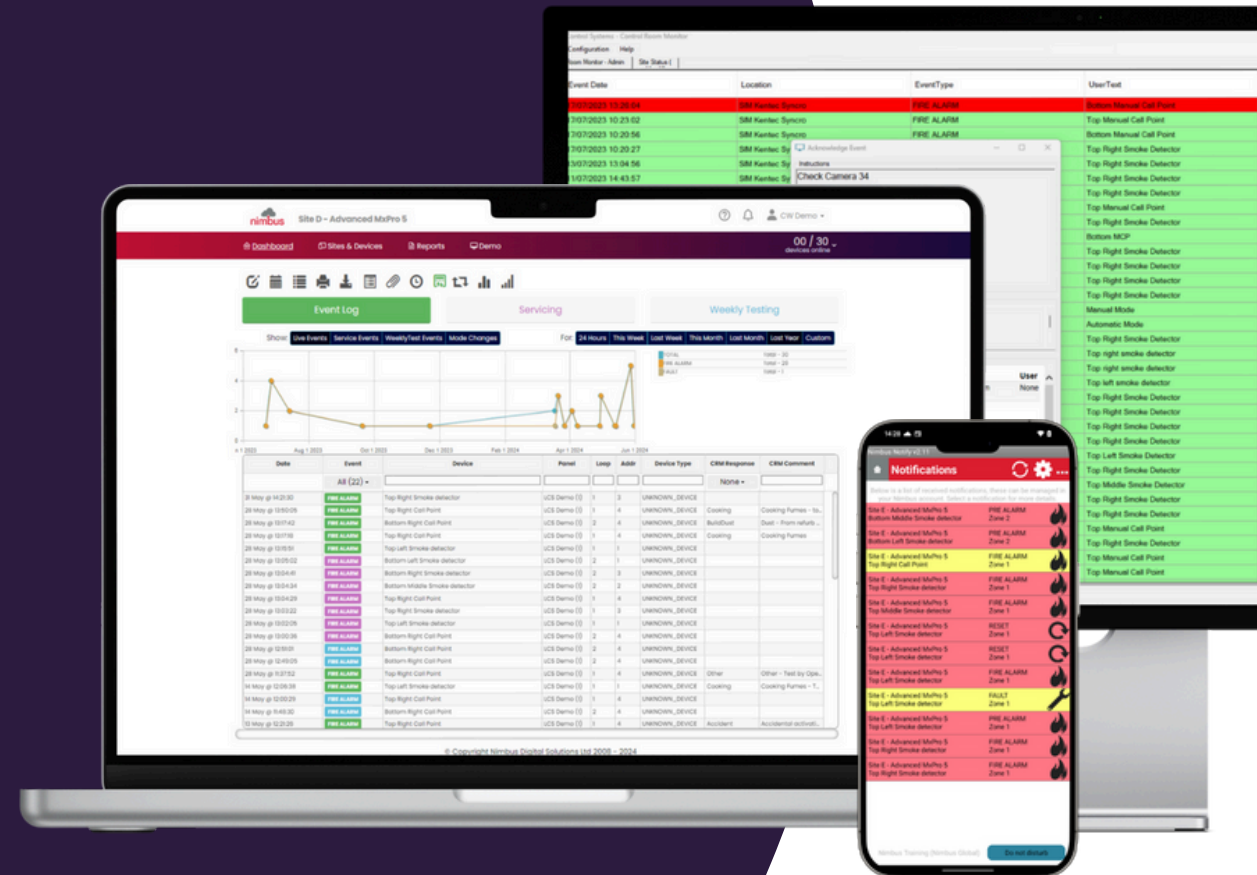


A smarter approach to fire alarm management.



Nimbus is a solution that connects key stakeholders with their fire alarm systems, simplifying compliance with fire safety standards and greatly improving visibility of critical events, augmenting first responder processes that save lives and protect assets.

Designed to retro-fit onto leading fire alarm systems in the market, Nimbus is a non-intrusive and cost effective way of making existing life-safety infrastructure smarter.



Staying compliant and notified

Ensuring fire safety equipment and alarm systems are operating correctly across multiple locations is no easy task. The complexity is compounded by various fire protection standards and regulations, systems provided by different manufacturers, diverse building management teams, and multiple maintenance providers or system integrators.

Nimbus solves these issues by consolidating all fire alarm data into one cloud-based store, delivering key information back to stakeholders in real-time, breaking down barriers in staying compliant and staying notified.

nimbusdigital.com



Nimbus delivers



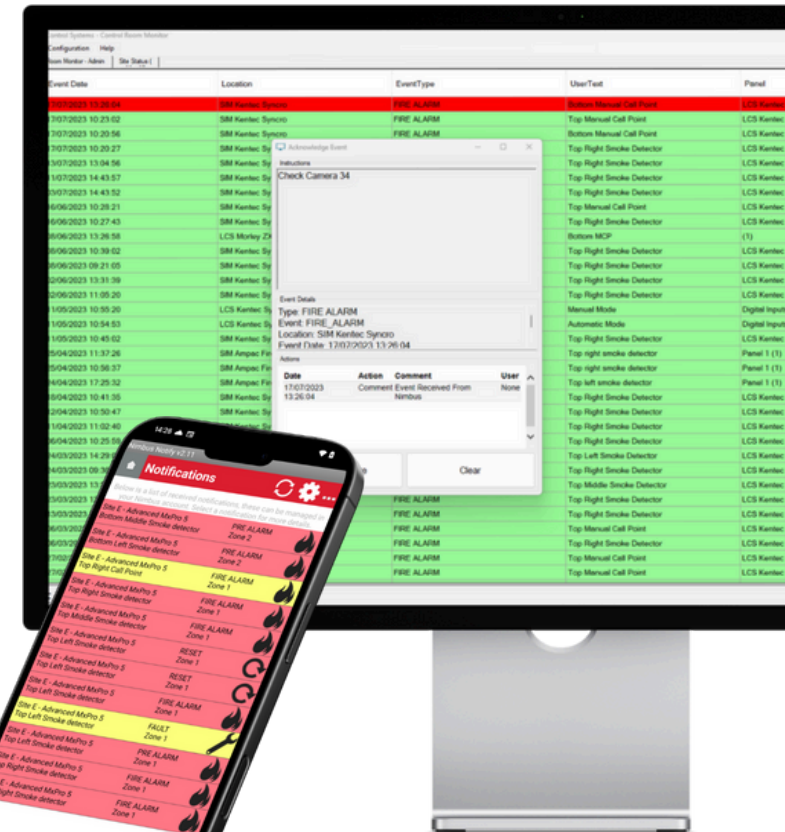
Instant event notifications

Furnish users with critical event notifications by email or smartphone with **Nimbus Notify App**. By utilising native push notifications, smartphones are able to receive and display Nimbus events even when the smartphone screen is locked and the application closed.

For those sites with a central or security office, **Nimbus Control Room Monitor (CRM)**, a dedicated Windows PC application, can be deployed. CRM is a remote monitoring application that receives, displays and consolidates log events from multiple Nimbus-connected systems. These systems can include fire alarm, CCTV and Intruder systems, in addition to other digital inputs. Alarms and events are monitored remotely and presented to the operator in scales of priority. CRM events can be customised to present the operator with site-specific and operational instructions.

Nimbus includes configurable “confirmed fire” and all notifications include the device location and description details from connected fire panels.

Nimbus Control Room Monitor (CRM)



*Nimbus
Notify
App*



**Harper Adams
University**

"The Nimbus solution's real-time monitoring, data exchange capabilities, and seamless integration with our existing fire systems have greatly improved our ability to respond to potential fire hazards and faults."

Nimbus delivers



Transparent and compliant servicing

Nimbus-connected sites can capture servicing data separate to live fire alarm events. This information is stored in a log, split by service period and is reviewable by both the servicing company and building manager in the **Nimbus Servicing Log**.

Automated reports supplement this transparency while also reducing paperwork, delays and inaccuracies. Reports can be generated on service completion, showing evidence and details of each service, device information, tasks performed, and engineer notes.

Nimbus Web Portal Servicing Log

The screenshot shows the Nimbus Web Portal Servicing Log interface. At the top, there's a navigation bar with the Nimbus logo and site information: "Site D - Advanced MxPro 5", "Site D > Nottingham", "Site D > Client 4". Below this is a dashboard with tabs for "Event Log", "Servicing", and "Weekly Testing". The "Servicing" tab is active, showing a summary table and a detailed log table.

		CallPoint	Detector	Total
21-05-2024 - Present	14 Days / 5 minutes 12 seconds	2	6	8
Devices Passed Testing		2	5	7
Scheduled Visits		0 completed		4
Percentage of Devices Tested		100.0	100.0	100.0%
Percentage of Devices Passed Testing		100.0	83.3	87.5%

Filter: Panel: Loop: Address: Zone:

Untested Devices	Click here to show untested devices	0	0	0
Devices Failed Testing	Click here to show failed devices	0	1	1
Devices With Advisories	Click here to show devices with advisories	1	1	2

28 May @ 13:00:12 / 5 minutes / 1 CW Demo / Show all tests / Show unique tests

Tested	Description	Panel	Loop	Address	Zone	Type
28 May @ 13:05:02	Bottom Left Smoke detector	LCS Demo (1)	2	1	Zone 2 (2)	Detector XP95 Optical Smoke Detector (55000- 600/620)
28 May @ 13:04:41	Bottom Right Smoke detector	LCS Demo (1)	2	3	Zone 2 (2)	Detector XP95 Optical Smoke Detector (55000- 600/620)
28 May @ 13:04:34	Bottom Middle Smoke detector	LCS Demo (1)	2	2	Zone 2 (2)	Detector XP95 Optical Smoke Detector (55000- 600/620)
28 May @ 13:04:29	Top Right Call Point	LCS Demo (1)	1	4	Zone 1 (1)	CallPoint XP95 Manual Call Point (55000-905)
28 May @ 13:04:01	Bottom Left Smoke detector - No Access Zone	LCS Demo (1)	2	1	Zone 2 (2)	Detector XP95 Optical Smoke

Nimbus delivers



Simplified and compliant weekly testing

Nimbus' intelligent scheduling and the Nimbus Weekly Test App streamline fire alarm testing by notifying users of upcoming tests and specifying which Manual Call Points (MCPs) to test. Users receive confirmation as tests are completed, with results automatically logged in the Nimbus Weekly Test log, and they can add photos or comments for additional context.

Nimbus administrators can customize the testing schedule and the number of MCPs to be tested. They can also set up user-defined pre and post-test tasks, such as notifying the Alarm Receiving Centre (ARC) before testing and verifying test receipt afterward.

nimbusdigital.com

Nimbus Web Portal Weekly Test Log

The image shows a laptop displaying the Nimbus Web Portal Weekly Test Log and a smartphone displaying the Nimbus Weekly Test App. The laptop screen shows a dashboard with tabs for Event Log, Servicing, and Weekly Testing. The Weekly Testing tab is active, showing a table with columns for Date, Description, Devices Tested, and Comments. The table lists test results for various dates and times, including '28 May @ 12:51:01' and '28 May @ 12:49:05'. The smartphone screen shows the 'Weekly Test' app interface with a red header, a list of devices to test, and a 'Complete' button.

Date	Description	Devices Tested	Comments
Next weekly test due: 2024-06-06 12:00:00 (2 days from now) by CW Demo			
Week 1 03 Apr @ 10:44:57	27 seconds	CW Demo	5 / 1 scheduled tests passed
28 May @ 12:51:01	Call Point	Bottom Right Call Point	P1 L2 D4 Zone 2 (2)
28 May @ 12:49:05	Call Point	Bottom Right Call Point	P1 L2 D4 Zone 2 (2)
14 May @ 12:00:29	Call Point	Top Right Call Point	P1 L1 D4 Zone 1 (1)
14 May @ 11:48:30	Call Point	Bottom Right Call Point	P1 L2 D4 Zone 2 (2)
13 May @ 12:14:40	Call Point	Bottom Right Call Point	P1 L2 D4 Zone 2 (2)
29 Apr @ 10:52:55	Call Point	Top Right Call Point	P1 L1 D4 Zone 1 (1)
29 Apr @ 10:49:57	Call Point	Bottom Right Call Point	P1 L2 D4 Zone 2 (2)
Week 1 03 Apr @ 10:33:12	48 seconds	CW Demo	1 / 1 scheduled tests passed
03 Apr @ 10:33:47	Call Point	Bottom Right Call Point	P1 L2 D4 Zone 2 (2)
Week 1 01 Apr @ 13:00:00	11 seconds	CW Demo	Weekly test missed
Week 1 27 Mar @ 11:50:51	50 seconds	CW Demo	1 / 1 scheduled tests passed
Week 1 25 Mar @ 12:00:00	11 seconds	CW Demo	Weekly test missed

Nimbus Weekly Test App



"The Nimbus units have eliminated the need for paperwork when testing manual call points and have provided 24/7 real-time visibility of each building's fire system status."

Nimbus Connect

Nimbus Connect is the conduit between your fire alarm system and the cloud, ensuring your system is always connected via cellular (4G), wi-fi, or ethernet. One device is required per network of panels, designed to seamlessly retrofit onto leading fire alarm systems in the market with no disruption to your building's occupants.

Compatibility

Nimbus is proudly compatible with leading fire alarm systems on the market. Click or scan the below QR code for a full list of supported technology.



 Advanced

 EMS
Wireless & Hybrid Fire Detection Solutions

 MORLEY IAS
FIRE SYSTEMS

 SIEMENS

 Ampac

 Honeywell
GENT

 NOTIFIER[®]
by Honeywell

 tyco



 Kentec
Electronics Ltd

 Protec
Fire and Security Group Ltd

 ZITON



Nimbus Connect Device



*A Nimbus Connect power supply
in wall mount metal enclosure*